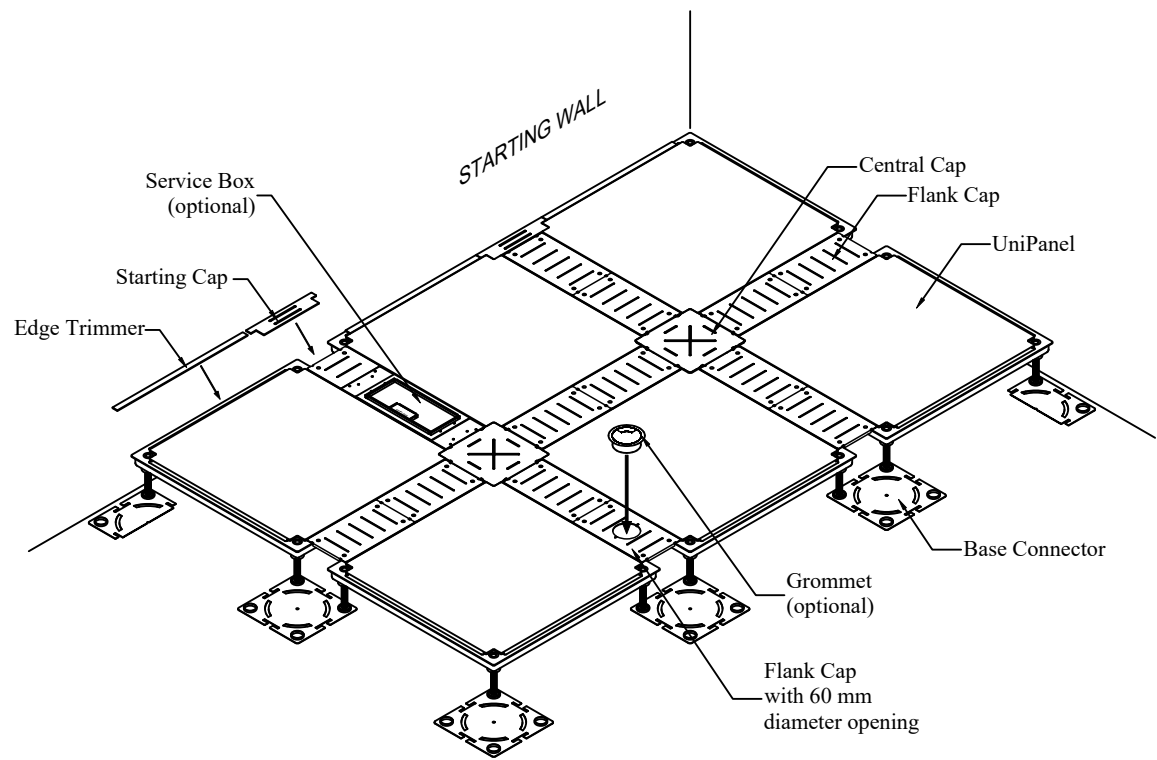
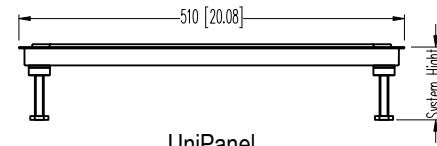
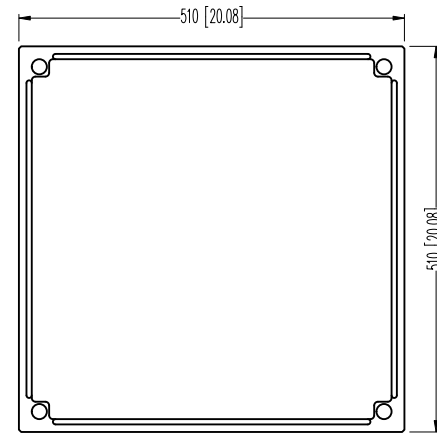


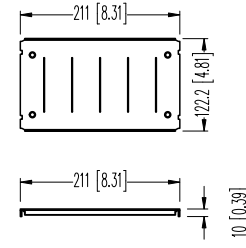
# Netfloor CamassCrete CS1000W Series Low-Profile Cable Management Access Floor



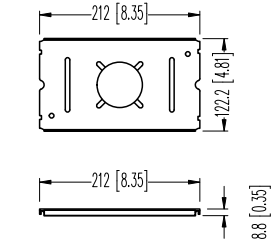
**STANDARD COMPLETED UNITS**



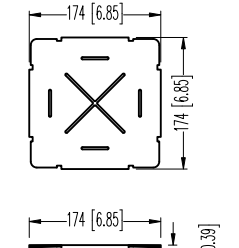
**UniPanel**



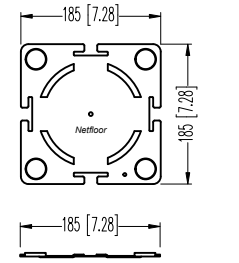
**Flank Cap**



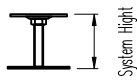
**Flank Cap with 60 mm diameter opening (optional)**



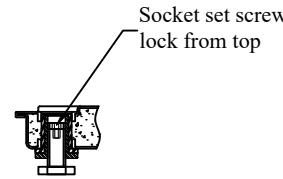
**Central Cap**



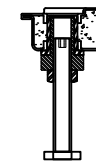
**Base Connector**



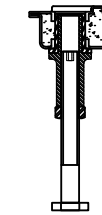
**Perimeter Supporter**



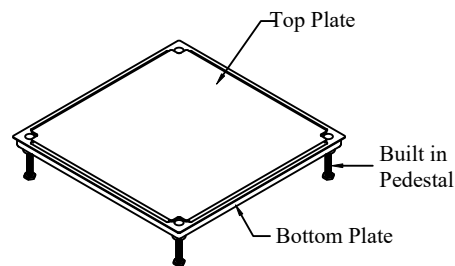
**Super Low-profile  
FFH 40 - 60mm  
(1.57" - 2.36")**



**Low-profile  
FFH 60 - 115mm  
(2.36" - 4.53")**

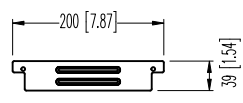


**Low-profile  
FFH 110 - 150mm  
(4.33" - 6.0")**

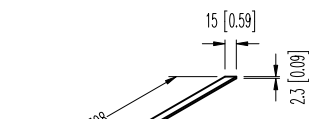


**UniPanel**

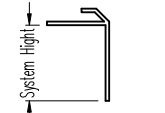
Self-standing, supported by 4 pedestals



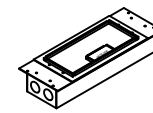
**Starting Cap**



**Edge Trimmer**



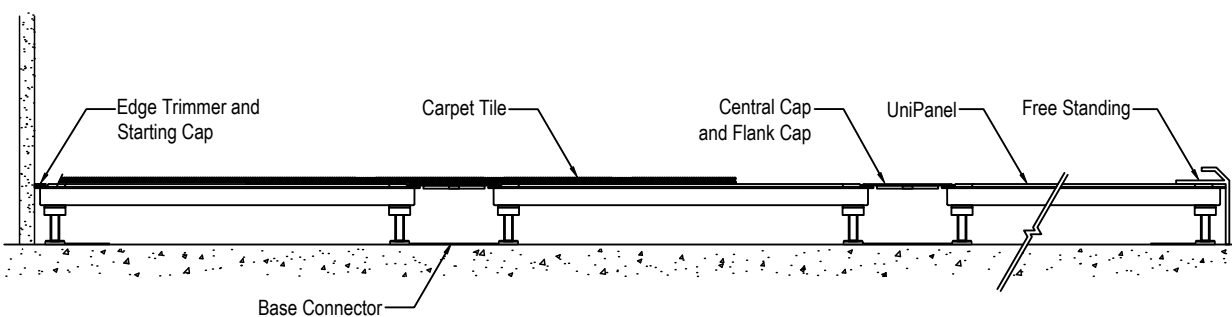
**Free Standing**



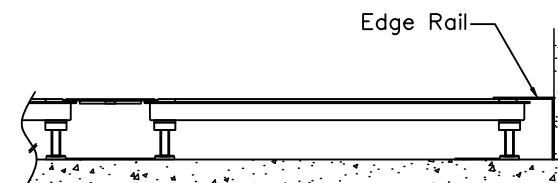
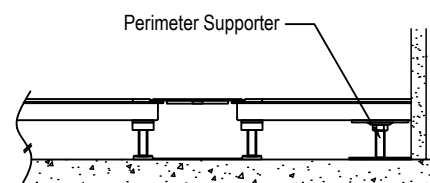
**Service Box (optional)**



**AD518 Grommet (optional)**



**TYPICAL RUN**



## CamassCrete CS1000W Access Floor Systems

- A. The system**
1. Netfloor CamassCrete CS1000W system
  2. system height: standard system height 1.57" to 6" (40 mm to 150 mm)
  3. modular size: 23.62" X 23.62" (600 X 600 mm), each module consists of 1 access panel (UniPanel), 1 Base Connector, 1 Central Cap, and 4 Flank Caps.
  4. system weight: average 7.36 LB per sq. ft. (36 kg per sq. meter)
  5. manufacturer: Netfloor, Inc.
- B. Access Panels: steel cementitious panels, supported by 4 pedestal sets at corners, self-standing.**
1. panel size: 20.08" X 20.08" (510 mm X 510 mm)
  2. thickness: 1.10" (28 mm)
  3. materials: steel cementitious welded panel, corrosion protection by powder coating.
  4. grooves: at four side of panel top, width 0.19" (5 mm), length 16.14" (410 mm), depth 0.315" (8 mm).
  5. hexagon-shape holes at four corners, for built-in by pedestal sets.
- C. Pedestal sets: factory assembled pedestal sets consisted of socket-sets and threaded studs. Each stud has 0.15" (4 mm) hexagon notch at top, which allows 0.15" (4 mm) hex key-wrench, to adjust height above the access floor. Made of steel, corrosion protection by zinc plating.**
- D. Four pedestal sets built-in at each panel's four corners, to form a self-standing access panel.**
- E. Cable Trench Caps: Central and Flank Caps to cover the cable trenches**
- F. Central Caps: made of steel, size 6.85" X 6.85" (174 mm X 174 mm), thickness 0.079" (2.0 mm), to install, and cover, at intersection of cable trenches, protection against corrosion by electro-deposition.**
- G. Flank Caps: made of steel, size 8.30" X 4.80" (211 mm X 122 mm), thickness 0.079" (2.0 mm), 0.39" (10 mm) bend at two ends, to install, and cover, cable trenches at sides of access panels, protection against corrosion by electro-deposition.**
- H. Base Connectors: size 7.28" X 7.28" X 0.20" (185 X 185 X 5 mm), made of galvanized steel, or steel protected by electro-deposition.**
- I. Cable Trenches configuration: At time of installation, Base Connectors connected at access panels' pedestals at corners. Continuous connection at access panels' pedestals by Base Connectors, automatically forms grid-pattern, standard 3.54" (90 mm) width cable trenches within every 23.62" (600 mm).**
- J. Cable Trenches capacity:**
1. open width: 3.54" (90 mm)
  2. inside width: 4.33" (110 mm)
  3. clearance: system height minus 0.315" (8 mm).
- end of section-----